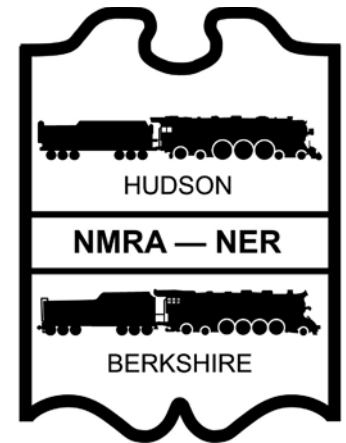


FORM 19

**The Official Newsletter of the
Hudson-Berkshire Division
of the NER NMRA**



Order Number 330

June 2017

June 17th - Division Meeting & Picnic with the Adirondack Live Steamers

Saturday from 10:00 to 4:00 at the ALS site in Saratoga Springs
(Map and directions on page 4)



Begun in 1983, Adirondack Live Steamers is a 1½ inch scale, 7¼ inch gauge railroad running in the woods near Saratoga Springs, NY. Engines include live steam and diesel style, running on both gas engine and battery power. Several Hudson-Berkshire Division members were part of the starting group back in 1983.

Train rides around the amazing layout will be available during the day thanks to ALS members.

The Officers of the Hudson-Berkshire Division have been working hard to prepare this end-of-year special program. And some have worked especially hard to arrange and prepare for this dining out by arranging catering by Miller's BBQ Catering of Esperance, NY, who will bring their self-contained

catering truck to ALS and set up a great buffet for those attending (and who have made reservations).

There will be food and beverages, including for the ALS members who will be out there running trains for us. This is an event for the family to enjoy, so make your plans and make your reservations. *Please let us know if you are planning to attend and who you are bringing so we can have an accurate head count for the food service. A quick email to trains@hudson-berkshire.org by June 10th will be perfect.*

So come and enjoy. And be sure to thank those who have worked to make this a great experience.

A special thanks from the Hudson Berkshire Division to the Adirondack Live Steamers and their members for making this possible. Be sure to extend your personal thanks to the ALS members staffing the engines and the site operations.

Above: Distinguished HB members & guests enjoying ride

See page 4 for more info and directions

www.hudson-berkshire.org
is now live with a new look and up-to-date content





Form19

The **Form19** is published eight times per year for members of the Hudson Berkshire Division.

The opinions expressed do not necessarily reflect those of the Division. Products and publications mentioned in **Form19** in no way constitute an endorsement by the Division.

Contributing to the Form19

The **Form19** staff welcomes all contributions. Letters, articles, photos, and other items may be mailed or e-mailed to the editor. Please include a note if you would like materials returned. Suggestions also welcome.

Hudson Berkshire Division
PO Box 83
Clifton Park, NY 12065-0083
trains@hudson-berkshire.org

President

Paul Hoffman
57 Vettura Court
Malta, NY 12020
518-899-5707
trains@hudson-berkshire.org

Vice President

Irwin Nathanson
609 Diamond Point Rd
Diamond Point, NY 12824
518-668-9892
irwindnathanson@fastmail.fm

Treasurer

Jack Cutler
8 Bluestone Ridge
Clifton Park, NY 12065
518 383-5684
cutlerjm@nycap.rr.com

Form19 Editor

Bert Pflegl
19 Lea Ave
Waterford, NY 12188
(518) 235-8496
gpflegl@nycap.rr.com

GTE Manager

Rich Smith
15 Friar Tuck Way
Saratoga Springs, NY 12866
518 581-0535
rsmith1@nycap.rr.com

Copyright 2017, Bert Pflegl
& Hudson Berkshire Division

The Ready Line

By Paul Hoffman

Rain, rain go away. The good news is I haven't had to run my lawn sprinklers yet this year!? Fingers and toes are crossed for good weather for our Family Day event at the Adirondack Live Steamers on June 17th. The caterer is lined up, Millers, and the ALS staff is primed and ready.

A big thank you to John Valachovic for hosting the Division last month. I loved the setting of his layout room and his plans for the pike look great. As an added bonus the drive out to John's was scenic and enjoyable. I can't wait to see what happens next on the Raquette Lake Railroad.

Also, a big THANK YOU to the BOD and the volunteers that make this Division what it is! They work tirelessly so we always have something interesting to do and experience. Volunteers are always needed to help make our organization function. We are STILL on the hunt for a recording secretary. Please consider donating some of your time to help the HBD be the best Division it can be.

Speaking of things to do, an idea has been floated to travel up to visit the Expo Rail Museum in Quebec. It would be about a three hour ride from Albany and would require a passport or enhanced NYS Drivers license for the border crossing. Those who have gone have raved about the place. In fact, I recall a **Form 19** article or two about it, check your past issues. Let me know if this is something the membership would be interested in pursuing?

In the meantime, be safe, be happy and I'll see you at ALS on Saturday June 17!

As President of this organization, the buck stops with me. If you have a problem or an issue, please work with your fellow members and do all that you can to help solve the problem. Our doors and thoughts are always open to a fellow member and we welcome all to become involved. Please remember to renew your membership in the NMRA and to encourage anyone interested in trains to climb aboard.

Repeating important information: You must send email to trains@hudson-berkshire.org by June 10 to inform us of how many in your party will be attending the picnic in order for the Division to provide a proper 'head count' to the caterer.

Arrangements have been made with both Adirondack Live Steamers and Miller's BBQ Catering to have a backup **raindate** of June 24. Check the Division website for updates. You will get an email if the date has been changed.

The **new hudson-berkshire.org** website is up and fully functional. Please check it out. Thank you Artie Krass.



This year's Hudson Berkshire Division Family Picnic at Adirondack Live Steamers on 17 June will be catered by Miller's BBQ Catering of Esperance, NY. They will be bring their self-contained catering truck to ALS.

Service will be buffet style - noon to 2:00pm.

The menu will include:

- Hamburgers
- Hot Dogs
- Rolls, condiments
- Cole Slaw
- Potato Egg Salad
- Fruit Salad
- Beans

All the sides are home made. The meat is fresh; has never been frozen.

For our vegetarians, options will include:

- Black Bean Veggie Burgers
- Vegetarian Hot Dogs

For more information, please see:

<http://www.millerscatering.com>

Beverages will be provided by the Division.

Kevin probably didn't expect to be putting his life at risk when working on the meat prep for the grill and when getting the rolls & buns ready. Concern was showing on his face, however, as Greg Whittle manned the grill. Their efforts were hard to replace.

For the last Division picnic at ALS, Sandy Surman, with the help of Kevin, did the planning, purchasing, and prep of the food. Sandy cooked and prepared the salads and directed the set up. Kevin worked on the prep and grilling of the meats. A great effort that we all enjoyed. Our thanks to both of you.



Welcome Aboard New Member

Sarah Lauser
Troy, NY

As always, greet others warmly at all the meetings. Introduce yourself to those you don't know.

The Division has a large number of badges on order and they should be here by the Picnic. Thank you all for waiting patiently.



Directions to joint picnic with ALS.

Please note that these directions are provided to HB members to get to the meeting. **Please DO NOT share this information with anyone outside the Hudson-Berkshire Division.** Adirondack Live Steamers is concerned about 'un-authorized access' to their facility and requests that this information be 'held close.'



Division members and guests, chauffeured by Ken Nelson, taking a ride on The Adirondack Southern during the June 17th Division picnic and outing in cooperation with the Adirondack Live Steamers. A great time was had by all. And the weather was great - no rain. Can you believe that - no rain - and some clouds to filter the sun so it wasn't too hot.



This fine 2-8-0 live steam engine was on the service rails at the last picnic last year. Diesel style engines provided motive power this year. All of these are the private property of the owners so, as at any layout visit, look but don't touch. But you are encouraged to talk with the owners and find out what it is like to operate and maintain power at this scale.

Please obey the safety signs that are posted around the Adirondack Live Steamers layout.




• Hands-On Clinics
• Layout Visits
• Operating Sessions
• Prototype Tours
• Fan Trips
• Banquet
• On-Site Modular Layouts
• Raffle in support of Toys for Tots
• Spouse Activities
• AP Contest
• Models Showcase
• More...

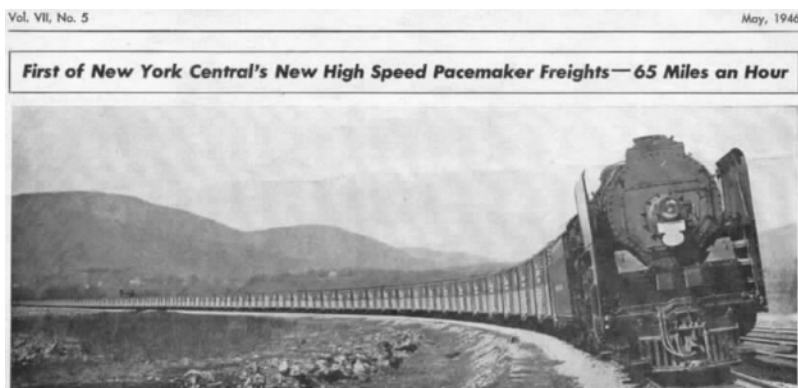
SAVE THE DATES!

The Pacemaker
2016 North East Regional Convention
Desmond Hotel and Convention Center
Albany, New York

September 15 – 18 2016

A Taste of the Division
A Toast to the Region

Sponsored by the Hudson-Berkshire Division

The Hudson Berkshire Division's 2016-2017 year kicked off with the 2016 Northeast Region 'Pacemaker' Convention at the Desmond Hotel and Conference Center. It was the culmination of almost two years of planning and preparation by many Division members. And a lot more worked at the Convention, while others put on the clinics, and still others as they opened up their homes and layouts for visits and operation sessions. Thank you all.

And that classic picture announcing the NYC Pacemaker Service is dated May, 1946.

The organizing committee headed by Kevin Surman with co-chairs Bill Doyle and Jack Cuttler put together a well planned, well prepared and well attended Regional Convention. The layout booklet provided descriptions and, for the first time, GPS coordinates instead of driving directions. The banquet was well attended, as you can see at the right. Bob Mohowski's presentation on how to take a long distance train trip motivated some listeners to do just that. Bill Doyle wrote about his in the February and March *Form 19*.



All the pre-convention publicity in the *The Coupler* and at the Amherst Rail Hobby Show, the previous January, paid off in good attendance and participation – 250 plus attendees. And no one has reported hearing a complaint of any sort. Everyone had a good time.

The person with the best time must have been Rich Smith. His scratch built models of the Milwaukee RR's New Lisbon Station, the New Lisbon engine house, and the bucket coal loading station took first, second and third places in Scratch Built Structures. The station earned him the Baldwin trophy (left) for "Best in Show."



In October the Division meeting was a layout visit to Don Klose's O-gauge Bellevue and Schenectady Railroad. Don's 20' x 30' cellar on Brandywine Avenue is packed with a layout that features a representation of Schenectady on one side and Wildwood, NJ on the other side - the destination of the B&S RR. The Schenectady portion features replicas of many of the important and distinguishing buildings that have characterized the city. To the left is the famed Nicholas Building noted for its famous German Restaurant. Since our visit, that building suffered significant structural damage and was demolished. Don's model may be the only one in existence. Don's layout has been featured in *O-Gauge Railroading* magazine and in several O-Gauge videos.

In November the Division visited our friends of the Upstate Model Railroaders at their new home in the Chase Sports Complex Building in South Glens Falls. This new location gives them three separate 17' x 40' spaces in which they are construction O, HO, N and Z scale layouts. Their skill and determination in building new layouts is amazing. Some HB Division members returned in mid-December to represent the Division and the NMRA at a holiday train show that UMR sponsored in a large recreation center portion of the same building.



The first Sunday of December 2016 saw the Great Train Extravaganza open at the Empire State Convention Center at the Plaza. This was, again, the culmination of months of planning and work by Rich Smith and the many volunteers he recruits and directs each year. Thousands of visitors look forward to this holiday event as do more than one hundred vendors who gladly sell their items to innumerable buyers even happier to take them home. It is an annual 'event.'

HB member repeatedly volunteer to help set up the GTE on Saturday and Sunday morning before the show. Many are there afterward to help vendors move out their repacked material. It is a time of work and of camaraderie. And it is really heart warming to see vendors greet each other and the customers that they have known for many years. The GTE is so much more than displaying model trains and selling stuff.





On Saturday January 28th, the Hudson Berkshire Division ran its charter bus service to the Amherst Model Railroad Society's Railroad Hobby Show in West Springfield, MA. The \$25 fee got the bus ride right to the door, admission, and eight hours to roam the seven acres of all things trains. There was even a full scale, live steam locomotive at the show. And if you buy a lot, you can talk friends into helping you carry the stuff to the bus.



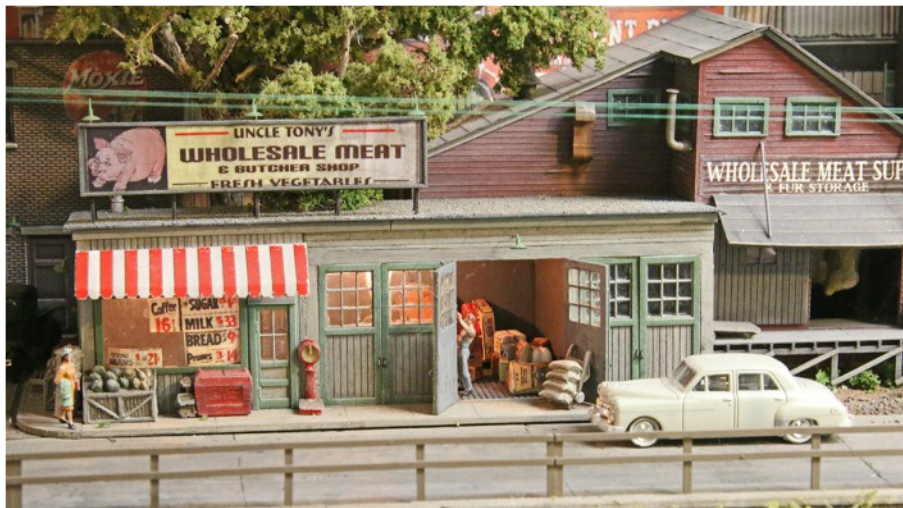
In February, the Division meeting was at the Malta Community Center where VP Irwin Nathanson talked about Miniatur Wonderland in Hamburg, Germany and then demoed & discussed European model technology. He demonstrated his Plasser & Theurer Ballast Tamper/Track Liner (left) with such articulation that one would think it able to tamp the ballast on a layout .

The Malta Community Center has been the venue for many Division meetings, such as this one (right) where Artie Krass explained JMRI Layout Editor. The MCC is a bit of a drive for many in the greater Capital District, where approximately 80% of the members reside. The benefit is that several members reside in the area supported by the MCC and, therefore, may reserve a room for the meeting at no charge. And this arrangement obviates the need to apply for and receive an insurance certificate from the NMRA National headquarters.





In March April, and May were three more layout visits.



Vic Roman's Hudson River Division of the NYC is centered on creating the impression of the city of Albany. Many of the scale buildings represent specific structures, but the details create the feeling of a city. The scene to the right shows what is BEHIND the Central Warehouse (very hard to see without a camera) and there is detail there, too. Above is a very small part of a street in Rensselaer. The detail makes it real – and inviting.



John Valachovic is at an even earlier stage of his recreation of the Raquette Lake RR. This early 1900s railroad in the heart of the Adirondacks served two still existing communities, it's namesake and Eagle Bay, as well as seven other entities along its eighteen mile route. John has done extensive research and planning to understand what was there, what he chooses from that to model, and how to fit that into the space that he has created.



You had a chance to see a completed, highly detailed layout, another that is in at earlier stage of development, and one that is getting off to a good start. Each layout shows the different interests and style of the owner-creator. And you had a chance to talk to each and learn of his experience.



Mike Hachey's S&D RR (left) is starting to take shape with the addition of streets and structures. Mike's favorite part of scale model railroading is the building of structures and, with the size of his basement layout, he is going to need a lot of them. He'll also have plenty of opportunity to create a lot of detail.



Many model railroaders are now choosing to add active signals to their layouts. This makes operating sessions more realistic and fun. Wiring signals and the electronics is a challenge, but the first challenge is mounting the signals. On the left, you can see a very realistic signal on a prototypical base. On the right you can see the base being installed. Does it look familiar? It should. It is a simple key-cap from an old computer keyboard. How many other things can be created from items in common use?



Maintaining the thoughts about detail, note how the detail of a wagon load of pumpkins (right) for sale at the station adds interest and catches the eye. Further right, you can see the challenge of creating a wagon and finding the pumpkins in the correct scale. What other containers and contents could be created to add interest?



Kansas City Streetcar started construction in May, 2014 and started service in May 2016. The *Form19* has brought you information on this system and others 'happening' in cities around the country, including financially stressed Detroit. In the year that it has been open, KC Streetcar has seen ridership grow along with demand for extensions to the Riverside area and south of the city. It has had to extend hours during the weekends and has ordered two more units. The line currently runs along a section of Main Street with a loop at one end in the business district.



The new hudson-berkshire.org website is live with a new look and up-to-date content. **CHECK IT OUT!**

Hopefully the train rides at the picnic will be just the start of your train adventures this Summer. Here are a few of the ones in the area that we know about:

The **Adirondack Scenic Railroad** (adirondackrr.com) with trains departing Utica Union Station, 321 Main St, Utica, NY Thursdays and Saturdays July 6 to August 31. Currently from Utica to Thendara through the heart of the Adirondacks.

Saratoga and North Creek Railway (snctr.com) has trips on Saturday and Sunday May 27 through October 8 departing Saratoga at 10:00am and departing North Creek at 3:40pm to arrive back in Saratoga at 5:57pm.

Cooperstown & Charlotte Valley Railroad (lrhs.com) has scheduled service on Thursdays and Sundays between Milford, NY and Cooperstown. There is a Brooks Barbecue Dinner Train on August 3, 17, & 31. They also offer a guest engineer program where you get to drive a MLW (Alco) locomotive on a round trip over the line (NOT pulling passenger cars).

The **Trolley Museum of New York** (tmny.org) in Kingston, NY is open 12:00 to 5:00 weekends and holidays May to October.

The Berkshire Scenic Railroad Museum offers **Hoosac Valley Train Rides** (hoosacvalleytrainride.com) from North Adams to Adams, MA on Saturdays and Sundays and holidays May 28 to October 16. It is a 10 mile round trip but takes an hour that is filled with narrative about the railroad history of the Hoosac Valley.

The **Essex Steam Train & Riverboat** (essexsteamtrain.com) operates daily June 17 to August 27 with weekend and special events through October 22. For the price of an HO boxcar you get a train ride and a boat ride. Can't beat that.

The **Shelborne Falls Trolley Museum** (sftm.org) offers rides in a restored 1896 trolley on Saturdays, Sundays, and holidays May 27 to October 29. Hours are 11:00am to 5:00pm. The rides are just 15 minutes, but your ticket allows unlimited rides for the day.

And, of course, **Amtrak** (amtrak.com) offers lots of rides to lots of places. The **Form19** refers you to Bob Mohowski's great presentation on how to book and take a trip on Amtrak at the Pacemaker Convention. Several members have already done that and more will this Summer. You can ride the train from Rensselaer to Port Henry, get off and, after a short wait, catch the southbound back to Rensselaer.

FORM 19

Hudson Berkshire Division
PO Box 83
Clifton Park, NY 12065-0083

First Class Mail



More examples of detail - the small things and the paying close attention kind.

To the left is a picture of a tiny part of Bob Hamm's layout. All the small things are in there as well as everything fitting together perfectly and seamlessly. If you get the chance, see Bob's layout. And ask him about some of his choices and techniques.

To the right is a scene from the Albany Union Station on Vic Roman's layout. Note the various people, the different styles of dress, the different styles of luggage and their placement, the bits of green weed along the building, the grungy, faded signs, and the differences in the mortar of the building wall.



It may be hard to see (at the left), but, during this meeting at Doug Dederick's house, more than one person admired the clouds that Doug has painted on his backdrop. They are so real looking that you expect to see them move with the breeze.

The time is the early 1940s. As you look at this picture of soldiers ready to board a train, you can get 'a lump in your throat' as you think of what might be ahead for them. The detail adds to the realism and the enjoyment. And for many modelers, focus on the detail is so enjoyable.





A detail that defies explanation. The second window from the right has cracks radiating from a point of impact from either inside or out. How do you create that in a model structure? It is on Vic Roman's layout. Another thing that you might only notice when you start looking at the pictures you took.

Details – and they had better be right. This is a picture of the first Lyons Brook Bridge on the New York, Ontario, and Western. Yes; they really ran trains, including passenger trains, over the bridge. I don't know how the design was done, but the construction was done carefully – and with attention to detail.



Above: A GP30 with great attention to detail. We're told that the photo was taken outside so that the engine would look more realistic in real sunlight.

Right: Good detail here. The balance of the lights on the engine is great as is the bits to represent litter along the track. The trees are part of the photo-backdrop.

