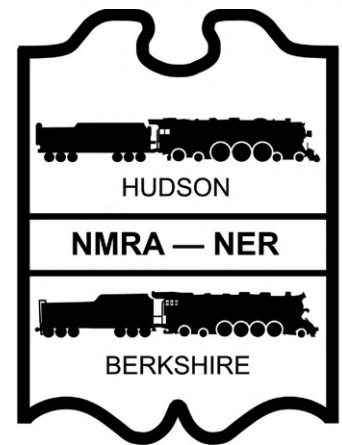


FORM 19

**The Official Newsletter of the
Hudson-Berkshire Division
of the NER NMRA**



Order Number 373

February 2022

Next Division Meeting

**February 19, 2022 Saturday from 10am to 1:00pm
Clifton Park Library, 475 Moe Rd., Clifton Park, NY, 12065.
“JMRI DecoderPro Clinic”**



From the Editor By MARK SKLAR

This month we are back to in person meetings. Please join us at the Clifton Park Library for our February meeting. The meeting details are on page 4.

You might ask, how is it that Form 19 associate editor Bert Pfligl is standing next to a full size 4-4-0 steam locomotive and why does he have that big smile? All the answers to that question and many more are answered in Bert's story "*Bill Logan's Model Engine*" starting on page 5.

There is sad news in that Paul Werschler (owner of "JP Trains and Hobbies) has passed. Artie Krass has written a heartfelt tribute to Paul on page 4.

See you here next month.
-Mark



Form19

The *Form19* is published ten times per year for members of the Hudson Berkshire Division.

The opinions expressed do not necessarily reflect those of the Division. Products and publications mentioned in *Form19* in no way constitute an endorsement by the Division.

Contributing to the Form19

The *Form19* staff welcomes all contributions. Letters, articles, photos, and other items may be mailed or e-mailed to the editor. Please include a note if you would like materials returned. Suggestions also welcome.

**Hudson Berkshire Division
PO Box 83**

**Clifton Park, NY 12065-0083
trains@hudson-berkshire.org**

President

Irwin D. Nathanson

P.O. Box 356

Diamond Point, NY 12824

518-668-9892

trains@hudson-berkshire.org

Vice President

Doug Dederick

32 Van Dyke Drive South

Rensselaer, NY 12144

518-283-5063

dougderick7@gmail.com

Treasurer

Benjamin Maggi

602 Albany Shaker Road

Loudonville, NY 12211

585-506-2680

BenLMaggi@hotmail.com

Form19 Editor

Mark Sklar

121 Brandon Ter.

Albany, NY 12203

(518) 229-9421

mark4527841@gmail.com

Bert Pflegl

Associate Editor

bpflegl@gmail.com

GTE Manager

James Lauser

1814 Park Blvd

Troy, NY 12180

james@jlauser.net

(518) 528-5453

Copyright 2021, Hudson Berkshire Division

The Ready Line

By Irwin D. Nathanson

A common topic of discussion seems to be: Is the hobby dying? Our membership seems to be getting older and older. Let's address this in this column...

Our January meeting was held virtually. Turn-out was good but, to be candid, could have been better. Your Leadership Team and I presented a "State of the Division" (as opposed to a "State of the Union") PowerPoint presentation. (If anyone would like me to send them a copy, just let me know: irwindnathanson@fastmail.fm)

We had *three* unexpected but most welcome visitors:

- Gordy Robinson, President of the entire NMRA organization
- Ed O'Rourke, President of our Northeastern Region
- Martyn Jenkins, International Director At Large

(As I've noted in a recent Ready Line, the NMRA is becoming more international. As examples, Gordy lives in the United Kingdom and Marty in Australia!)

All three guests joined in the conversation and their comments were much appreciated. Gordy discussed some of his strategies for building our membership, especially with a goal of attracting more younger members. He mentioned that, in conversations with a major American model train manufacturer, their customer profile indicated that most of their on-line customers were, I believe, in their mid-thirties.

That manufacturer will soon be including NMRA information in all their fulfillment packages.

As an aside, from what I can tell, we're going to see much more transparency from National than we've seen in the past. For example, one of our past HBD Presidents once asked for an accounting of how National spends the association's money. This was in relation to what was perceived as a high dues structure relative to similar organizations. As I recall, the response from National was vague; it ducked the issues. Gordy, on the other hand, brought the topic up himself and promised that he was working on a full accounting to share with the membership.

In general, it seems that social media is bringing in a lot of young modelers into the hobby. New, high-tech products are especially interesting to younger modelers.

This past weekend I attended the Amherst Model Train Show in Springfield. As expected, due to COVID and the dire weather forecasts, the number of vendor tables was way down, perhaps 75% or even less of pre-COVID shows. On Saturday, the show was very quiet, very few visitors. On Sunday, most of the snow had been cleared and the show was much busier, but still not back to pre-COVID levels. (By the way, the forecast for Springfield for Saturday, was

(Ready Line Continued on next page)



(Ready Line continued from page 2.)

2 feet of snow. It was cold and windy, but Springfield got only about 2 inches!)

On Saturday, there were very few families. I don't think I saw a single child in a stroller. The clowns in the Young Building didn't even put on their Magic Shows on Saturday. Saturday, it seemed, was "reserved" for serious modelers. What struck me was how many of them were young. Perhaps in their teens or early 20s. Many were in groups, seemingly college students. But there were lots of them, very

noticeable in their obvious enthusiasm. I'll bet few were NMRA members. The big question that National is addressing is: why???

So, at our local level, *how do we attract new HBD members, especially younger modelers?* What are your ideas? What would you do? Please share your comments and suggestions with me and I'll discuss them with your Leadership Team.

Our February event will hopefully be in person. Please see

the meeting details below and please do try and attend.

Before closing, I'd like to pay my respects to Paul Werschler, owner of JP's model train shop in Latham, who recently passed away. Please see Artie's fitting tribute within the pages of this Form 19.

Take care, everyone, stay safe and happy!

Irwin

Upcoming Meetings/Events

"JMRI DecoderPro Clinic"

February 19, 2022 Saturday from 10am to 1:00pm
Clifton Park Library, 475 Moe Rd., Clifton Park, NY, 12065.

James Lauser will present a clinic on using Decoder Pro

JMRI DecoderPro is the cheap and easy way to program your locomotives' DCC decoders from your computer. No more complicated programming via your throttle. No more looking up CVs out of huge tables in your decoder manual. Just click some easy to understand options, push a button to program, and you're done. This clinic will go over what you need to get started, setup, and what it looks like to do several common programming tasks.

Please Note: As of today they still require you wear a mask inside the Library.

March Event

Watch for details in the March Form 19.



“Welcome to JP’s Trains and Hobbies”

By: Artie Krass

I would venture to say just about everyone in the area, HB members and visitors from out of town heard that welcome by Paul (Werschler) whenever they entered JP’s Trains and Hobbies. Sadly, that greeting by Paul will no longer be heard – Paul passed away peacefully on February 1, 2022.

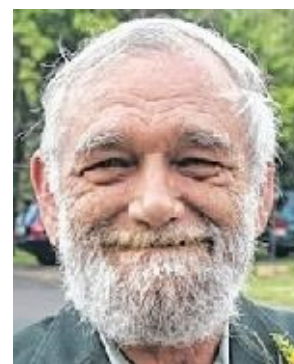
Those that knew Paul benefited – a great advocate of the hobby, a great supporter of the Division, and a great supporter of our Toys for Tots effort. I had the pleasure for many years working with Paul on our Toys for Tots

purchases. I remember a number of years ago I stopped by after work and he and I loaded up the boxes of train sets on the back of his truck so we could take them to the Toys for Tots “warehouse” over at Albany Airport. Paul was thrilled to meet Gunny Sgt. Roman and they presented him with a Toys for Tots hat and hoodie – I still remember the smile on his face that night.

I am sure there are many others with fond remembrances of Paul and their own stories to tell. He was that kind of guy. I use to stop by after work when he was getting ready to close and we would chat – he was always asking about how all of you were doing and was “concerned” at times when he hadn’t seen or heard from someone in a while.

I often got phone calls from him at night just wanting to talk – as I am sure many of you did – he was just that kind of genuine friend and person.

Rest in Peace my friend.

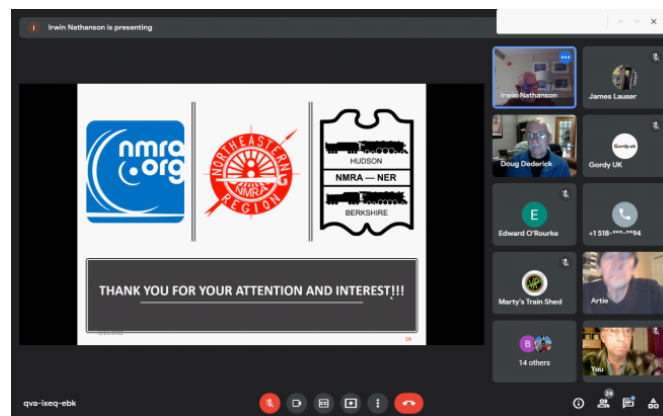
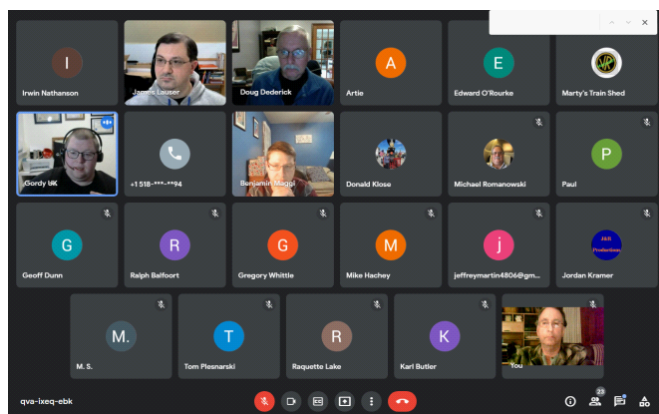


To read Paul’s obituary go to <https://www.chasesmithfamily.com/obituary/paul-werschler> (ed.)

January Meeting Report

The January division meeting was held virtually with Google Meet. HBD president Irwin Nathanson gave a presentation on the “The State of the Division”. NMRA President Gordy Robinson, Martyn Jenkins, NMRA World Wide Director and Ed O’Rourke, President of our Northeastern Region were present at the meeting, which is a division first. Gordy and Marty

listened to Irwin’s presentation and participated a lot in the discussion afterwards. The biggest question was how the NMRA is going to attract new members and retention. Gordy had ideas which Irwin will discuss in his *Ready Line* column. (ed.)





Bill Logan's Model Engine

Bert Pflegl, Associate Editor

Most of us interested in model trains have built something for a layout or just for the fun of it. Perhaps you built a structure or some rolling stock. Some might even have built an engine. There are individuals in the division that have built working engines in 1" and 1½" scale. How about building a model engine in full scale?

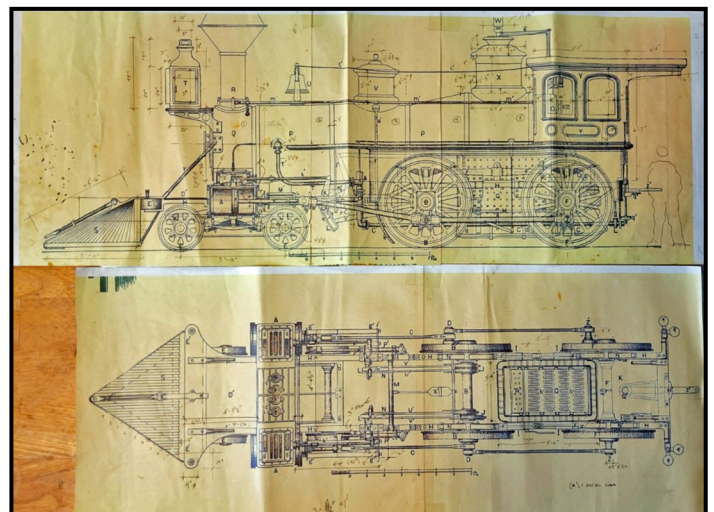


This image was the inspiration that bill used for building No. 3.

Meet Bill Logan, of Old Chatham, NY, an architect in the US and Europe who has designed buildings, designed and built a large fiberglass sailboat, designed and built various sculptures, and built a 4-4-0 full size. And why would one do that? Well, if you lived at the end of Depot Lane in Old Chatham and across the Rutland Railroad right-of-way from the former station, now a fine home, you might be tempted.

Now that right-of-way started out as the Lebanon Springs Railroad in 1852. It later became the Rutland Railroad's Chatham (Corkscrew) Branch from Bennington to Chatham purchased in 1901. It was given the 'Corkscrew Branch' nickname, as the route chosen by the original builders had 263 curves, some heavy grades, and often required double-heading steam engines. It was an operational nightmare but provided a direct way to ship milk to Chatham and so into New York City. It was abandoned in 1931. The roadbed past Bill's house is arrow straight in both directions.

One might rightly surmise that there was more than proximity to a depot and right-of-way that would motivate Bill to want to build a full-size 4-4-0; and you would be correct. Bill's grandfather started buying



Continued on next page.



railroad toys (not to scale) in the early 1900s; simple cast metal that looked like a steam engine or car. He continued that interest as toy trains appeared on the market. Bill's father became an avid model railroader with Lionel trains. And it was his father who acquired a copy of The 1871 Grant Locomotive Works Catalog (of Paterson, NJ). This book has pictures of engines and components, with descriptions of constructions for many configurations. One might even be able to construct a locomotive from all that information.

And then a friend of Bill, Dick Dorsey (also a friend of the Division), showed up with a copy of Jim Shaughnessy's 'The Rutland Railroad.' And it had pictures of Rutland engines that looked just like some in the Grant Catalog.



Bill Logan shown explaining the construction techniques used to build the model.

Bill has had experience with fiberglass over foam sculptures. So based on that, he began to make parts. As you can see in the photos, the engine is composed of many fitted parts, just as in the catalog, made to the specified dimensions, then painted and put together. The wheels have rims with flanges, spokes and hubs, all



One of Bill's sculptures in his backyard.

fitted and covered to make them each one piece. There are leaf springs and suspension parts. Cylinders with rods and linkages. Light and cow catcher. And it's all full size – but it only weighs 450 to 500 pounds, without the cab, which is plywood, and has quite a bit of detail inside. An amazing creation from a man with amazing talent.



Bill Logan showing Mark Sklar key components of the locomotive model.

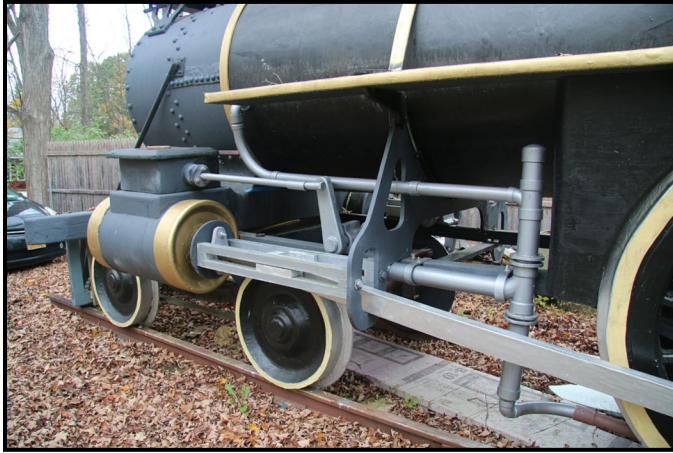
It is nice to have a 4-4-0 in one's driveway, but it takes up a lot of space, as you can see. Bill requests that if any reader has knowledge or a suggestion for a permanent home for this marvel, that they contact the Form 19 Editor and the information will be passed on.



Another view of Rutland number "3"

The End

For more on Rutland number "3" go to the page 7.



View showing the valve gear and front wheels.

(ed). In the fall of 2020 HBD member Dick Dorsey emailed me about a friend of his named Bill Logan. He sent a picture of Bill's 4-4-0 and said:

"I am sending this to you to alert you to an item possibly of interest for the readers. I have a friend, architect Bill Logan, who lives nearby in Old Chatham. Bill's house is on Depot Lane where the old Rutland Railroad came through the village. The railroad station still exists as a private home. Bill's house is almost directly across the right of way and was once a hardware storehouse during part of the railroad's existence."

In recognition of the Rutland and its predecessors Bill has made a scale model of a General Grant locomotive (built in Paterson, New Jersey), which was used by the railroad and once ran in front of his house

What is unusual about his work besides the craftsmanship is its scale: one to one."

After reading this I was quite intrigued but COVID 19 was raging and the vaccines were not out so I told Dick I would contact Bill Logan later. Almost a full year later in the fall of 2021 I asked Form 19 associate editor Bert Pflagl if he wanted to visit Bill with me. Bert contacted Bill and we visited him at his home in Old Chatham on a cool autumn morning. As we drove up to Bill's home we saw the 4-4-0 in the driveway and we both smiled with amazement. Bill was very gracious with his time and we learned about the railroad around old Chatham and his locomotive model or sculpture. From Bill's property you could see the run-down foundation of the old Borden milk bottling plant and

another house that was used by the Rutland. We had a very pleasant visit and a big **thank you** to Bill Logan and to Dick Dorsey for contacting me about Bill.

If you would like to learn more about Bill Logan and see more of his sculptures then you can visit his web page at <https://williamloganartist.com> and WilliamLoganDesign.com.



The cab details are shown in this view. The cab is constructed of wood and will support a person.

The End

Please visit the
Hudson Berkshire Division Website:
<http://www.hudson-berkshire.org/>

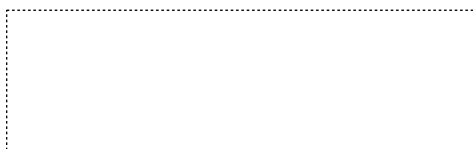
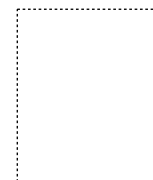
And Facebook Pages:
<https://www.facebook.com/HudsonBerkshireNMRA/>

www.hudson-berkshire.org



FORM 19

Hudson Berkshire Division
PO Box 83
Clifton Park, NY 12065-0083



First Class Mail